

SEIWA



The Future

The Legacy

NAVIGATING THE SEAS OF TOMORROW

www.seiwadirect.com



Multifunction Display

SEIWA today

Seiwa have been navigating the seas of tomorrow for thirty years now... and we are still enjoying it! To celebrate this pivotal anniversary, which put us amongst the most experienced marine electronics producers in the world, we are introducing a whole lot of exciting innovative products. The RC45 remote control will improve and make the Ft70 eaves easier to use and enjoy. The unique compass beam will help you plot your route and give you valuable and important info about what lies ahead of you.

More valuable functions have been added to the Ft70: Complete bi-directional WiFi communication, NMEA 2000 compatibility, 2 Video input for onboard security cameras.

The Ft70 is the perfectly matched by the HB20, a powerful WiFi connection box able to connect every onboard instrument to the Multi-Function Display.

Last but not least, the new SW AP05 sets a new mark in the Seiwa autopilots range; new design, improved stability and ruggedly built, the SW AP05 is the intelligent autopilot system for both power and sailing vessels from 6m to 40m. The SW AP05 integrates all features for leisure or commercial use with compact, panel-mount control head; and offers the strength and reliability of an extra hand on the helm. Discover and exciting new world of novelties and the incredible offer on www.seiwadirect.com.

Ft70 Features

| | |
|---|--|
| LCD | LCD 7" WSGA 1024x600, 1000 nits, 24 bit color, wide viewing angle |
| Resolution | 1024x600 pixel |
| Remote Control | Joystick, rotor and 5 keys |
| GPS antenna | Internal/External |
| Connectors | 24 PINS POGO connector |
| Cartography | C-Map by Jeppesen MAX© and C-MAP 4D© Charts |
| Microprocessor | Dual Core Cortex A9 1GHz, Freescale IMX6-DUAL |
| NAND memory | 2Gb |
| RAM memory | DDR3 400MHz 64 bit bus, 1GBytes |
| Graphic | 3D GPU (200Mtri/sec - 1Gpxl/sec) + 2D GPU (300Mpxl/sec) |
| Internal GPS | (uBlox NEO6Q) with internal antenna WAAS/EGNOS/MSAS |
| Cartridge slot | 1 Micro SD |
| I/O connector | 24 PINS POGO connector for powered quick disconnect bracket |
| Direct Connections | 2 x Serial + 1 USB OTG |
| Additional Connections with optional connection cables | 2 Serial + 2 USB |
| Supply Voltage | 10-35 Vdc |
| Operating temperature | 0/55° C |
| WiFi | Available Dual Band |

Ft70 Multi Touch

Multifunction Display with Remote Control



RC45



Ft70



SunLight Viewable



Warranty Years



Designed by Jeppesen Marine



Waterproof



AIS



DSC



Man Over Board

Features referred to Ft70 Multifunction Display

www.seiwadirect.com



HB20 WiFi HUB

wireless router for all your devices!

The Hub for all your connections: Connect your GPS, engine, Fish Finder, Radar to the HB20.

This will be connected to the plotter through the Quick Disconnect bracket with a single practical cable or via WiFi where available.

WiFi connection with second display: at the same time, the HB20 can communicate via WiFi with a second display (Plotter, Tablet, Smartphone etc). Compatible with Ft70 Multi-Touch GPS display.

Plug 'n play: connect HB20 WiFi HUB to your plotter and it will work without the need of any specific driver.

HB20 HUB Features

Connections

| | |
|---------------------|---|
| Serial port | 2 |
| USB port | 1 |
| Video Input | 2 |
| Ethernet | 1 |
| CAN Bus NMEA2000 | 1 |
| WiFi | ✓ |
| Multipole connector | 1 |



You put the boat, we put the right electronic equipment!

Suggested System

Whatever your need is, we have what it takes for all types of sailing yachts, as well as all types of power boats. Whether is a single station solution or tailor-made networked systems; whether you are cruising or weekend sailing, or if you race, there will always be the right combination of products to satisfy your needs.

Seiwa offers a wide range of radars, black box fish finder, GPS antenna and multifunction instruments, as well as the innovative Ft70 Multi-Touch GPS Display compatible with HB20 WiFi HUB for a perfect WiFi network onboard.

They can also be connected to autopilots and NMEA instruments, for the most complete package.

As every boat and every boat owner is one of a kind, please refer to your local Seiwa dealer for the best advice on the most suitable solution for your needs.

Under 30' Open



Autopilot
SW AP01



NMEA
SW RP-03, RP-05, RP-07



Chartplotter/Fishfinder
SW 501i



Black Box Fish Finder
50/200

Under 30'



Autopilot
SW AP01



NMEA
SW RP-03, RP-05, RP-07



HB20 WiFi HUB



Ft70 Multi-Touch
with remote control

Over 30' Pro



Autopilot
SW AP01



Chartplotter/Radar/Fishfinder
EXPLORER³



Black Box Fish Finder
50/200



Radar
Radome SWR 9

Over 40'



Autopilot
SW AP05



Chartplotter/Radar/Fishfinder
MARLIN



Chartplotter/Radar/Fishfinder
EXPLORER³



Black Box Fish Finder
50/200



Radar
Radome SWR 9

Over 50'



Autopilot
SW AP05



NMEA
SW RP-03, RP-05, RP-07



Chartplotter/Radar/Fishfinder
EXPLORER³



Chartplotter/Radar/Fishfinder
SW 1101



Radar
Radome SWR 9

Technical Specifications - Traditional Chartplotters Fishfinders



| | MARLIN | SUN 1101 | SUN 701i - SW 701e | SUN 501i - SW 501e | EXPLORER 3 | SEAWAVE | SUN 501ci - SW 501ce | SUN 701ci - SW 701ce |
|--|--|--|--|--|--|--|--|--|
| DISPLAY TYPE | TFT transmissive LCD (active area 15") | Sun Light Viewable Color LCD (active area 10.4") | Sun Light Viewable Color LCD (active area 7" wide) | Sun Light Viewable Color LCD (active area 5") | N | TFT transmissive LCD (active area 12.1") | Sun Light Viewable Color LCD (active area 5") | Sun Light Viewable Color LCD (active area 7" wide) |
| SCREEN SIZE w x h (mm & Inch) | W 307 [12.10"] H 230.7 [9.10"] | W 211.2 [8.3"] H 158.4 [6.2"] | W 152.4 [6"] H 91.4 [3.6"] | W 77 [3.1"] H 103.5 [4.1"] | N | W 247 [9.7"] H 185.5 [7.3"] | W 77 [3.1"] H 103.5 [4.1"] | W 152.4 [6"] H 91.4 [3.6"] |
| RESOLUTION | 1024 x 768 pixels | 800 x 600 pixels | 800x480 pixels | 240x320 pixels | 640 x 480 or 800 x 600 or 1024 x 768 pixels user selectable | 800 x 600 pixels | 240 x 320 pixels | 800 x 480 pixels |
| DIMENSIONS (mm & Inch) | L 345.4 [13.6"] W 378 [14.86"] H 99 [3.9"] | L 224 (8.8") W 332.5 [13.1"] H 128 [5"] | L 154 (6.1") W 244 (9.6") H 89.0 [3.5"] | L 147.7 [5.8"] W 147.7 [5.8"] H 114.7 [4.5"] | L 95 (3.7") W 140 (5.5") H 84.4 [3.3"] | L 342 [13.5"] W 381.5 [15"] H 221 [8.9"] | L 147.7 [5.8"] W 147.7 [5.8"] H 135 (5.5") | L 154 (6.1") W 244 (9.6") H 89.0 [3.5"] |
| CARTOGRAPHY | C-MAP C-CARD | C-MAP SD-CARD | C-MAP SD-CARD | C-MAP SD-CARD | C-MAP C-CARD | C-MAP C-CARD | C-MAP SD-CARD | C-MAP SD-CARD |
| OPERATING VOLTAGE | 10 - 35 V dc. | 10 - 35 V dc. | 10 - 35 V dc. | 10 - 35 V dc. | 10 - 35 V dc. | 10 - 35 V dc. | 10 - 35 V dc. | 10 - 35 V dc. |
| INTERFACE INPUTS/OUTPUTS | 5 I/O Ports (NMEA0183) | 5 I/O Ports (NMEA0183) | 5 I/O Ports (NMEA0183) | 3 I/O Ports (NMEA0183) | 5 I/O Ports (NMEA0183) | 5 I/O Ports (NMEA0183) | 2 I/O Ports (NMEA0183) | 4 I/O Ports (NMEA0183) |
| BBFF | Y | Y | Y | Y | Y | Y | BUILT-IN | BUILT-IN |
| RADAR | Y | Y | Y | N | Y | Y | N | Y |
| AIS | AIS 38400 | AIS 38400 | AIS 38400 | AIS 38400 | AIS 38400 | AIS 38400 | AIS 38400 | AIS 38400 |
| VIDEO INPUT | 2 | 2 | 1 | N | N | 2 | N | 1 |
| MICROPROCESSOR | 400Mhz | 300Mhz | 300Mhz | 300Mhz | 400Mhz | 200Mhz | 300Mhz | 300Mhz |
| C-CARD SLOTS | 2 | | | | 2 | 4 | | |
| USER POINTS | 10000 | 10000 | 10000 | 5000 | 10000 | 10000 | 5000 | 10000 |
| SD SLOTS | | 1 | 1 | 1 | | 1 | 1 | 1 |
| TYPE OF USER POINTS | 16 Types & 8 Colors | 16 Types & 8 Colors | 16 Types & 8 Colors | 16 Types & 8 Colors | 16 Types & 8 Colors | 16 Types & 8 Colors | 16 Types & 8 Colors | 16 Types & 8 Colors |
| ROUTES | 50 | 50 | 50 | 25 | 50 | 50 | 25 | 50 |
| MAX USER POINTS PER ROUTE | 10000 | 400 | 400 | 200 | 10000 | 10000 | 200 | 400 |
| TRACKS | 10000 | 5 | 5 | 5 | 10000 | 10000 | 5 | 5 |
| TRACKPOINTS | 10000 | 10000 | 10000 | 5000 | 10000 | 10000 | 5000 | 10000 |
| FEATURES | MOB Grounding Alarm Arrival Alarm Depth Alarm XTE Alarm Anchor Alarm User Points List page Port & Tide Info Automatic Info On Cartographic Objects Navigation Info Find Port Find Wrecks Find Obstructions Find Tide Station 3D Road Page Time to Destination Distance to Destination Fuel Consumption Compass Calibration Wind Functions | MOB Grounding Alarm Arrival Alarm Depth Alarm XTE Alarm Anchor Alarm User Points List page Port & Tide Info Automatic Info On Cartographic Objects Navigation Info Find Port Find Wrecks Find Obstructions Find Tide Station 3D Road Page Time to Destination Distance to Destination Fuel Consumption Compass Calibration Wind Functions | MOB Grounding Alarm Arrival Alarm Depth Alarm XTE Alarm Anchor Alarm User Points List page Port & Tide Info Automatic Info On Cartographic Objects Navigation Info Find Port Find Wrecks Find Obstructions Find Tide Station 3D Road Page Time to Destination Distance to Destination Fuel Consumption Compass Calibration Wind Functions | MOB Grounding Alarm Arrival Alarm Depth Alarm XTE Alarm Anchor Alarm User Points List page Port & Tide Info Automatic Info On Cartographic Objects Navigation Info Find Port Find Wrecks Find Obstructions Find Tide Station 3D Road Page Time to Destination Distance to Destination Fuel Consumption Compass Calibration | MOB Grounding Alarm Arrival Alarm Depth Alarm XTE Alarm Anchor Alarm User Points List page Port & Tide Info Automatic Info On Cartographic Objects Navigation Info Find Port Find Wrecks Find Obstructions Find Tide Station 3D Road Page Time to Destination Distance to Destination Fuel Consumption Compass Calibration Wind Functions | MOB Grounding Alarm Arrival Alarm Depth Alarm XTE Alarm Anchor Alarm User Points List page Port & Tide Info Automatic Info On Cartographic Objects Navigation Info Find Port Find Wrecks Find Obstructions Find Tide Station 3D Road Page Time to Destination Distance to Destination Fuel Consumption Compass Calibration | MOB Grounding Alarm Arrival Alarm Depth Alarm XTE Alarm Anchor Alarm User Points List page Port & Tide Info Automatic Info On Cartographic Objects Navigation Info Find Port Find Wrecks Find Obstructions Find Tide Station 3D Road Page Time to Destination Distance to Destination Fuel Consumption Compass Calibration | MOB Grounding Alarm Arrival Alarm Depth Alarm XTE Alarm Anchor Alarm User Points List page Port & Tide Info Automatic Info On Cartographic Objects Navigation Info Find Port Find Wrecks Find Obstructions Find Tide Station 3D Road Page Time to Destination Distance to Destination Fuel Consumption Compass Calibration Wind Functions |



Technical Specifications - Autopilots Instruments GPS Antenna



SW AP05 Autopilot



SW AP01 Autopilot



NMEA Data SW RP03



DEPTH SW RP05


SW RP07
Log/Speed/temperature


GPS ANTENNA

| | | | | | |
|---|---|---|---|---|---|
| DISPLAY: | backlight LCD with 6 m cable | backlight LCD with 6 m cable | Large, 4 digit LCD display, 5 levels of backlight with external backlight control | Large, 4 digit LCD display, 5 levels of backlight with external backlight control | Large, 4 digit LCD display, 5 levels of backlight with external backlight control |
| INPUT FORMAT: | NMEA 0183 | NMEA 0183 | NMEA 0183, standard and proprietary sentences | | |
| INPUT CHANNELS: | 2 | 2 | 4 | | |
| OUTPUT: | 1 | 1 | | 1 NMEA 0183 | |
| ELECTRIC POWER SUPPLY: | 12 to 14Vdc* | 12 to 14Vdc | 9.50 to 33Vdc, .035 A nominal | 9.50 to 16.00Vdc, .037 A nominal | 9.50 to 33.00Vdc, .037 A nominal |
| OPERATING TEMPERATURE: | -10° to 50°C | -10° to 50°C | 0° to 50°C | 0° to 50°C | 0° to 50°C |
| ELECTRIC POWER SUPPLY RANGE: | : 10 to 16 Vdc | 10 to 16 Vdc | | | |
| DATA INPUT, VOLTAGE RANGE: | | | 0 to 5 V Nominal, -20V to +20V maximum | | |
| INTERFACES: | NMEA 0183 · 2 INPUT · 1 OUTPUT | NMEA 0183 · 2 INPUT · 1 OUTPUT | | | |
| CONSUMPTION: | Standby 0.3 A @ 12 Vdc during pilotage with 20% duty cycle: 2.5A | Standby 0.3 A @ 12 Vdc during pilotage with 20% duty cycle: 2.5A | | | |
| COMPASS: | Fluxgate, 8 mt cable | Fluxgate, 8 mt cable | | | |
| ACCURACY: | 2°RMS | 2°RMS | | | |
| ROLL/PITCH | ± 35° | ± 35° | | | |
| RUDDER TRANSDUCER: | 10 mt. cable | 10 mt. cable | | | |
| MOTOR DRIVE: | 15A continuous, 30A peak | 15 A continuous, 30 A peak | | | |
| ACCESSORIES INCLUDED: | helm transducer, controller, fluxgate compass, junction and control box | helm transducer, controller, fluxgate compass, junction and control box | | | |
| HELM POSITION ACCURACY: | | 1° | | | |
| MEMORY: | | | Up to 10 new sentences (can be overwritten) | | |
| RESOLUTION: | | | | 0,1 metre to 20,0 - 1 over 20 | from 0,1 knots, MPH, Km/h, 0,1 °F, °C |
| KEEL OFFSET OF RANGE REGULATION: | | | | -6 to +6 m | |
| ALARMS (On/Off icon): | | | | Shallow water alarm Deep water alarm · Anchor alarm | |
| ADDITIONAL FEATURES: | | | | Units of measurement in Feet, Metres and Fathoms | Units of measurement in Knots, MPH, Km/h, °F, °C |
| TRANSDUCERS: | | | | stern and thru-hull plastic transducer, thru-hull bronze transducer | stern and thru hull in plastic for speed/temperature, thru hull in bronze for speed/temperature Speed, Average Speed, Water Temperature, Regatta Chronometer, Elapsed Time |
| DATA DISPLAYED: | | | | | Speed from 0.00 to 50.0 knots Temperature from 0.0°C to 32.0°C Regatta chronometer from 1 to 99 minutes |
| RANGE: | | | | Depth from 0.3 to 365 metres | |

* 24 Vdc optional upon request

| | |
|---|---|
| OVERALL DIMENSIONS (ø x height): | 97 x 32 mm (flush/pole/rail mounting) |
| WEIGHT: | 160 grams (without cable) |
| CABLE: | 15 meter 8x28AWG |
| INPUT VOLTAGE: | 10-35 Vdc. |
| POWER CONSUMPTION: | 0,8 W max |
| ELECTRICAL INTERFACE : | TTL voltage levels, RS-232 polarity |
| RECEIVING METHOD : | 16 channels parallel (up to 3 for WAAS Satellites) |
| RECEIVING FREQUENCY : | 1575.42MHz (L1, C/A code) |
| RECEIVING SENSITIVITY : | Less than -134 dBm |
| TIME TO FIRST FIX (TTFF) | Warm Start :33 seconds (typical) Cold Start :40 seconds (typical) |
| ACCURACY POSITION : | Less than 2.5mCEP1 5.0mSEP2: GPS;(SA=OFF; HDOP<4) Less than 2.0mCEP1 3.0mSEP2: DGPS;(SA=OFF; HDOP<4) |
| DYNAMICS ACCELERATION: | Strong Signals <= 4g Weak Signals typical 1g |
| ALTITUDE: | 18000m |
| VELOCITY: | 1850Km/h (515 m/sec) |
| DGPS FORMAT: | WAAS; EGNOS; MSAS |
| OUTPUT FORMAT: | NMEA-0183 Baud rate 4800 N81 |
| NMEA OUTPUT MESSAGES: | GGA, RMC, GSA, GSV, TXT |
| GEODEIC DATUM : | WGS84 |
| OPERATING TEMPERATURE: | from 0°C to +60°C |
| STORAGE TEMPERATURE: | from -20°C to +85°C |
| RELATIVE HUMIDITY: | 95% non-condensing |
| WATER RESISTANCE: | IPX7 |

Technical Specifications - Fishfinder Radar Scanners



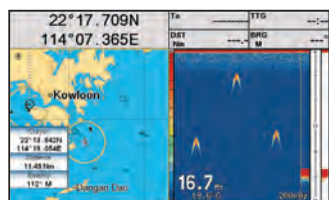
BBFF MK-II - Black Box Fishfinder

| | |
|-----------------------------------|---|
| DISPLAY COLOURS: | 16 colours on colour chart plotter |
| DISPLAY RESOLUTION VERTICAL: | up to 400 pixels (depending on chart plotter screen resolution) |
| ELECTRIC POWER SUPPLY: | 10-35 Vdc |
| MAXIMUM POWER CONSUMPTION: | 17W max (1A @12V) |
| POWER CONSUMPTION on stand-by: | 1.7 W max |
| OPERATING FREQUENCY: | 50/200 kHz |
| ACOUSTIC SOUNDER POWER: | 600/1000W (4800/8000 Wpp) |
| EXTERNAL AUDIBLE SIGNAL (buzzer): | 12Vdc, 400ma |
| OPERATING TEMPERATURE: | 0°C to + 50°C |
| WEIGHT: | 1Kg |
| DIMENSIONS: | 193mm x 55mm |
| LEVEL OF PROTECTION: | IP 54 |



| | SWR 9 | SWR 8 | SWR 1 |
|---------------------------|---|---|---|
| ANTENNA | 1.8 Feet | 1.5 Feet | 0.9 Feet |
| TRANSMITTING POWER | 4Kw | 2Kw | 2Kw |
| TRANSMITTING FREQUENCY | 9410 ±30Mhz | 9445 ±30Mhz | 9445 ±30Mhz |
| BEAM WIDTH (DEGREE) | 4.0° Horizontal , 25° Vertical | 4.7° Horizontal , 25° Vertical | 7.0° Horizontal , 25° Vertical |
| ROTATION | 24rpm | 30rpm | 30rpm |
| OPERATING TEMPERATURE | -25 to +55 °C | -25 to +55 °C | -25 to +55 °C |
| APPARENT WIND FUNCTIONING | 100Knots | 100Knots | 100Knots |
| WATER RESISTANCE | IPx6(IEC60529) | IPx6(IEC60529) | IPx6(IEC60529) |
| SCALE (NM) | 1/8 ~36 | 1/8 ~24 | 1/8 ~24 |
| IMAGE PRESENTATION | Full 240x240/480x480 dots(2Bits) Quadrant: 120x120/240 x240 dots(2 Bits) | Full 240x240/480x480 dots(2Bits) Quadrant: 120x120/240 x240 dots(2 Bits) | Full 240x240/480x480 dots(2Bits) Quadrant: 120x120/240 x240 dots(2 Bits) |
| WIRE LENGHT | 10M (optional additional cable available) | 10M (optional additional cable available) | 10M (optional additional cable available) |
| SUPPLY VOLTAGE | 12.8 to 41.6 VDC | 12.8 to 41.6 VDC | 12.8 to 31.2VDC |
| POWER CONSUMPTION MAX | 45W or Less | 30W or Less | 30W or Less |

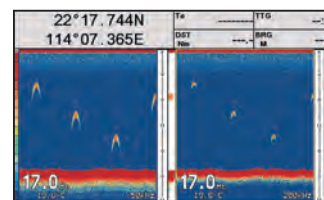
Traditional Chartplotters and Combo units key features



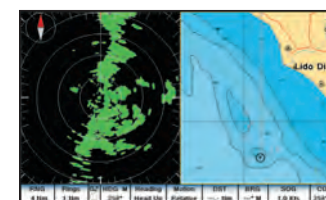
Chartplotter & Echosounder



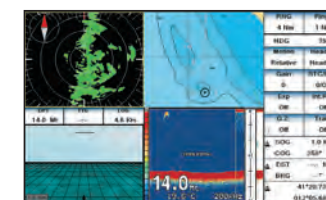
Gauges



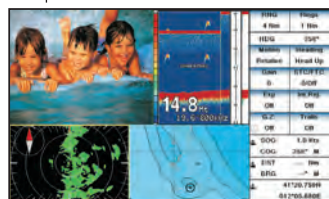
Double Frequency Fishfinder



Cartography and Radar split screen



Radar, Chart, 3D Road View and Echosounder



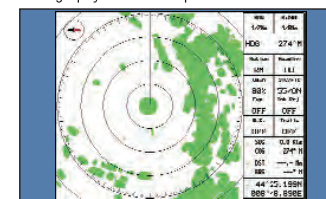
Multifunction display - Video Camera



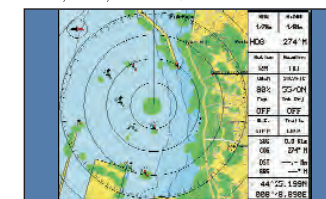
Navigation Data



Wind Data



Radar Full Page



Radar Overlay



Seiwa S.R.L.
Via Velleia, 4
20900 Monza (MB)
Italy
Phone: +39 039 9151273
Fax: +39 039 9151274

Seiwa Co Ltd
916 Po Lung Centre
11 Wang Chiu Rd
Kowloon Bay
Hong Kong
info@seiwa-marine.com

Distributed by

www.SeiwaDirect.com

The screenshot shows the SeiwaDirect.com website interface. The main banner features the 'FT70 Multi-Touch Screen' with the description '7-inch widescreen multifunctions GPS chartplotter'. A hand is shown touching the screen, which displays a map. Below the banner, there is a section for 'On Micro SD-Card' showing a microSD card and a Jeppesen chart. A 'Click here and view details' button is present. The website also includes a 'Buy Back Program' section with a 30% discount, a 'Do you need a software update?' section, and a 'Warranty 5 Years' badge.

- **FREE REGISTRATION;**
- **NO order commitment;**
- **NO freight costs;**
- **NO minimum order value;**
- **Shipping in 2 working days;**
- **All stock always available;**
- **Extra discount on small quantities;**

**ENTER and
CHECK PRICES**